

## Verplichte module ensembleleiding – niveau D

### Eindterm e Maat en ritme – ritmische bouwstenen kleine trom

Ritmische bouwstenen staan niet op zichzelf. Ze zullen in de speelstukken altijd in een bepaalde muzikale context geplaatst zijn. Onderstaande voorbeelden zijn indicaties in welke muzikale context de ritmische bouwstenen voor het C-niveau gedacht zijn. De toepassing is afhankelijk van maatsort en tempo, zoals hieronder is weergegeven in de voorbeelden 1 t/m 8.

$\text{♩} = 108 - 120$

This block contains two staves of musical notation. The top staff features four rhythmic patterns: a triplet of eighth notes, another triplet of eighth notes, a quintuplet of eighth notes, and a sixteenth-note triplet. The bottom staff features five rhythmic patterns: a sixteenth-note triplet, a triplet of eighth notes, a triplet of eighth notes with a dotted quarter note, a quarter note, and a quarter note.

#### Voorbeeld 1

A single staff of musical notation in 4/4 time. It contains four measures of music. The first measure has a quarter note followed by a triplet of eighth notes. The second measure has a triplet of eighth notes followed by a quarter note. The third measure has a triplet of eighth notes followed by a quarter note. The fourth measure has a quarter note followed by a quarter rest.

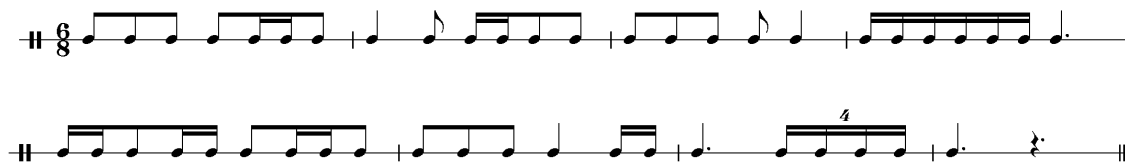
#### Voorbeeld 2

Two staves of musical notation in 5/4 time. The top staff contains four measures: a quarter note followed by a triplet of eighth notes, a quarter note followed by a triplet of eighth notes, a quarter note followed by a triplet of eighth notes, and a quarter note followed by a triplet of eighth notes. The bottom staff contains four measures: a quarter note followed by a triplet of eighth notes, a quarter note followed by a triplet of eighth notes, a quarter note followed by a triplet of eighth notes, and a quarter note followed by a quarter rest.

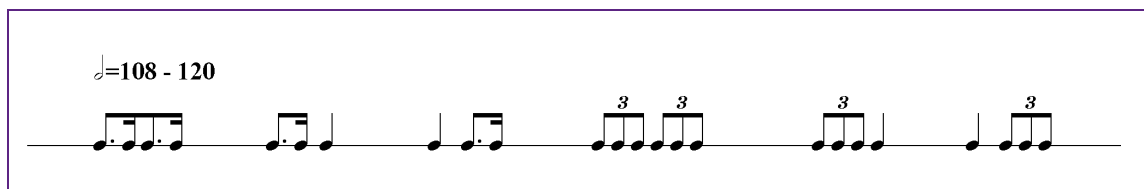
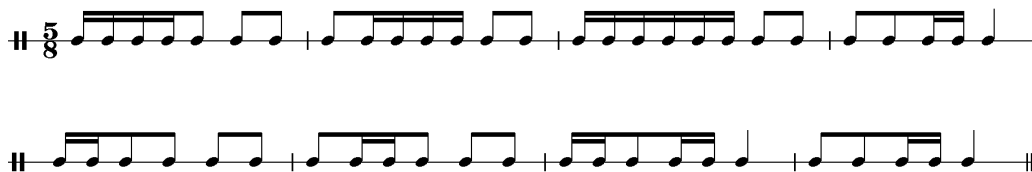
$\text{♩} = 108 - 112$

This block contains two staves of musical notation. The top staff features five rhythmic patterns: a triplet of eighth notes, a triplet of eighth notes, a triplet of eighth notes, a triplet of eighth notes, and a triplet of eighth notes. The bottom staff features three rhythmic patterns: a triplet of eighth notes, a triplet of eighth notes, and a triplet of eighth notes.

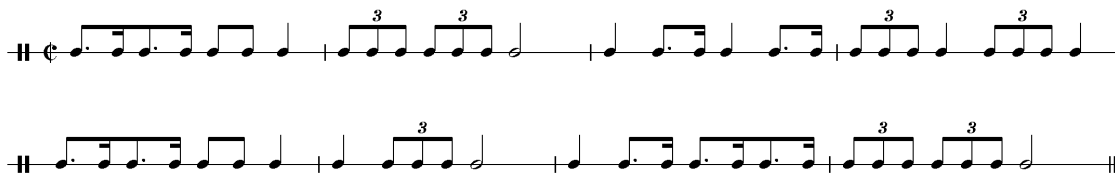
Voorbeeld 3



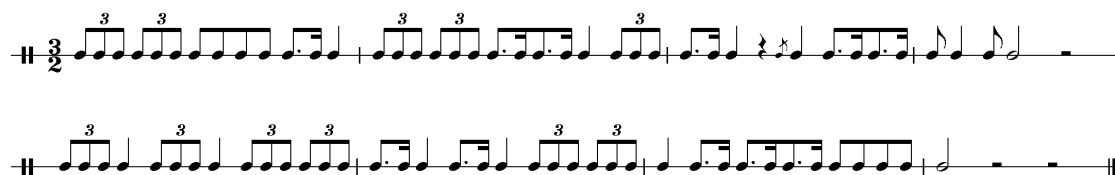
Voorbeeld 4



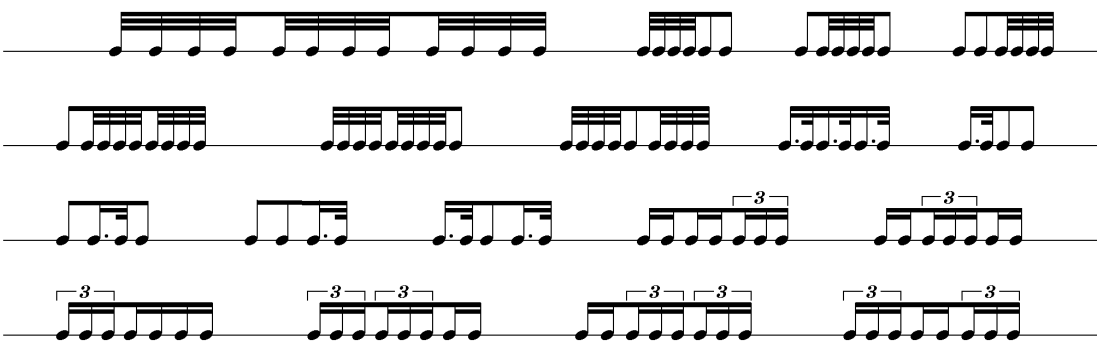
Voorbeeld 5




Voorbeeld 6



♩. = 66 - 80



### Voorbeeld 7



### Voorbeeld 8

