

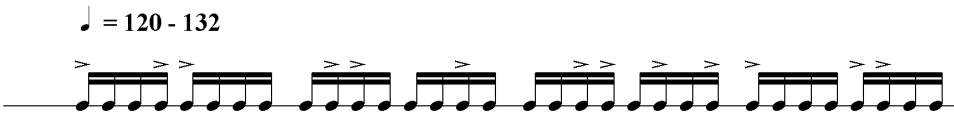
Keuzemodule accenten/roffels – niveau 3

Technische vaardigheden – accenten

Accenten zullen in de spelstukken altijd in een muzikale context geplaatst zijn. Onderstaande voorbeelden zijn indicaties in welke context de accenten voor niveau 3 geacht zijn.

Onderstaande accentoefeningen (uit niveau 2 – voorbeeld 1 t/m 4) nu zowel rechts als links beginnen.

♩ = 120 - 132




Voorbeeld 1

2e met links beginnen




Voorbeeld 2

2e met links beginnen



♩ = 86 - 96



Voorbeeld 3

2e met links beginnen



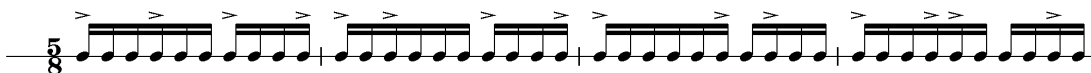
Voorbeeld 4

2e met links beginnen

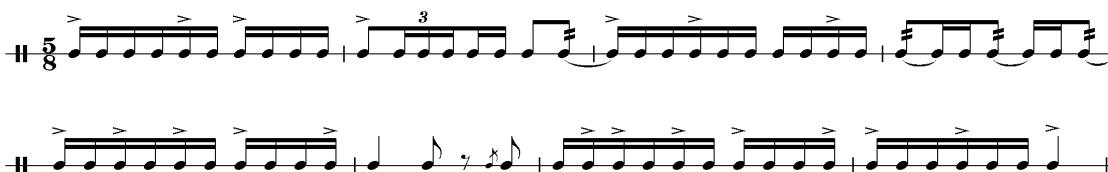


accenten in 5/8 maatsoort

♩ = 86 - 96



Voorbeeld 5

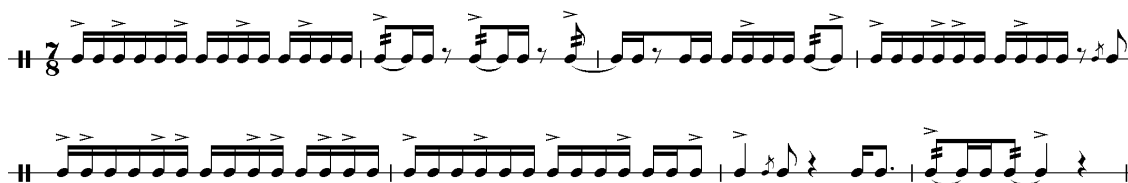


accenten in 7/8 maatsoort

♩ = 86 - 96



Voorbeeld 6



♩ = 108 - 112



Voorbeeld 7

Two staves of musical notation in 4/4 time. The first staff contains two measures of music, each with a triplet of eighth notes followed by a quarter note. The second staff contains two measures of music, each with a triplet of eighth notes followed by a quarter note. Accents (>) are placed above the first note of each triplet.

♩ = 86 - 96

A single staff of musical notation showing a continuous sequence of triplets of eighth notes. Each triplet is marked with a '3' and an accent (>) above the first note.

Voorbeeld 8

Two staves of musical notation in 6/8 time. The first staff contains two measures of music, each with a triplet of eighth notes followed by a quarter note. The second staff contains two measures of music, each with a triplet of eighth notes followed by a quarter note. Accents (>) are placed above the first note of each triplet.

♩ = 108 - 112

A single staff of musical notation showing a continuous sequence of triplets of eighth notes. Each triplet is marked with a '3' and an accent (>) above the first note.

Voorbeeld 9

Two staves of musical notation in 4/4 time. The first staff contains two measures of music, each with a triplet of eighth notes followed by a quarter note. The second staff contains two measures of music, each with a triplet of eighth notes followed by a quarter note. Accents (>) are placed above the first note of each triplet.

♩ = 72 - 80

A single staff of musical notation showing a continuous sequence of triplets of eighth notes. Each triplet is marked with a '3' and an accent (>) above the first note.

Voorbeeld 10

