

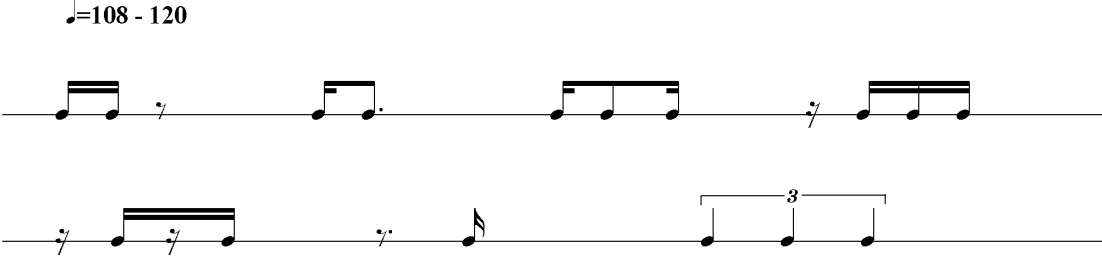
Keuzemodule accenten/roffels – niveau 2

Technische vaardigheden – ritmische vaardigheden

Ritmische bouwstenen

Ritmische bouwstenen staan niet op zichzelf. In de speelstukken zullen ze altijd in een muzikale context geplaatst zijn. Onderstaande voorbeelden zijn indicaties in welke context de ritmische bouwstenen voor niveau 2 gedacht zijn. Toepassing is afhankelijk van maatsoort en tempo.

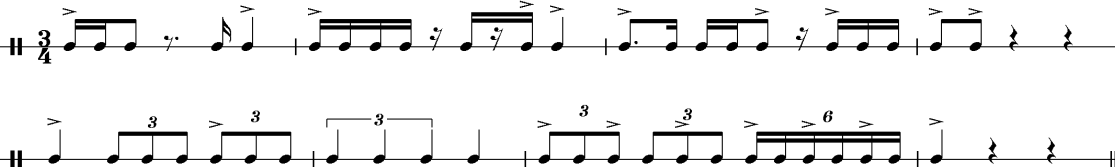
$\text{♩} = 108 - 120$




Voorbeeld 1




Voorbeeld 2



$\text{♩} = 108 - 112$



Voorbeeld 3



Voorbeeld 4



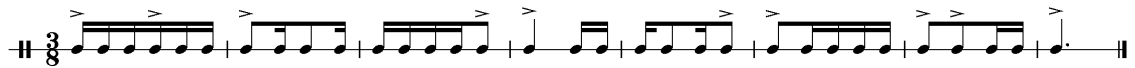
♩. = 72 - 80

A rhythmic pattern on a single staff. It consists of five measures: 1. quarter note, quarter note, quarter note; 2. quarter note, quarter note, quarter note; 3. quarter note, quarter note, quarter note; 4. quarter note, quarter note, quarter note; 5. quarter note, quarter note, quarter note.

Voorbeeld 5



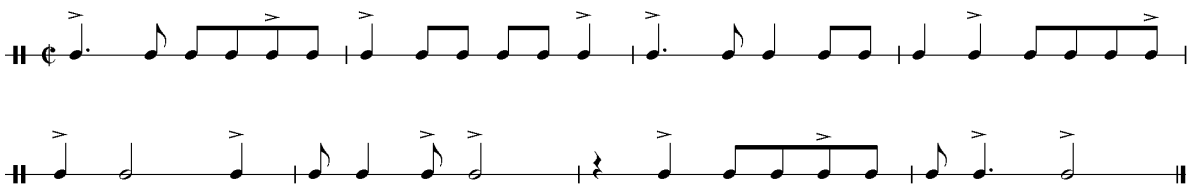
Voorbeeld 6



♩ = 108 - 120

A rhythmic pattern on a single staff. It consists of 8 measures: 1. quarter note, quarter note, quarter note; 2. quarter note, quarter note, quarter note; 3. quarter note, quarter note, quarter note; 4. quarter note, quarter note, quarter note; 5. quarter note, quarter note, quarter note; 6. quarter note, quarter note, quarter note; 7. quarter note, quarter note, quarter note; 8. quarter note, quarter note, quarter note.

Voorbeeld 7



♩. = 72 - 80

A rhythmic pattern on a single staff. It consists of 12 measures: 1. quarter note, quarter note, quarter note; 2. quarter note, quarter note, quarter note; 3. quarter note, quarter note, quarter note; 4. quarter note, quarter note, quarter note; 5. quarter note, quarter note, quarter note; 6. quarter note, quarter note, quarter note; 7. quarter note, quarter note, quarter note; 8. quarter note, quarter note, quarter note; 9. quarter note, quarter note, quarter note; 10. quarter note, quarter note, quarter note; 11. quarter note, quarter note, quarter note; 12. quarter note, quarter note, quarter note.

Voorbeeld 8

